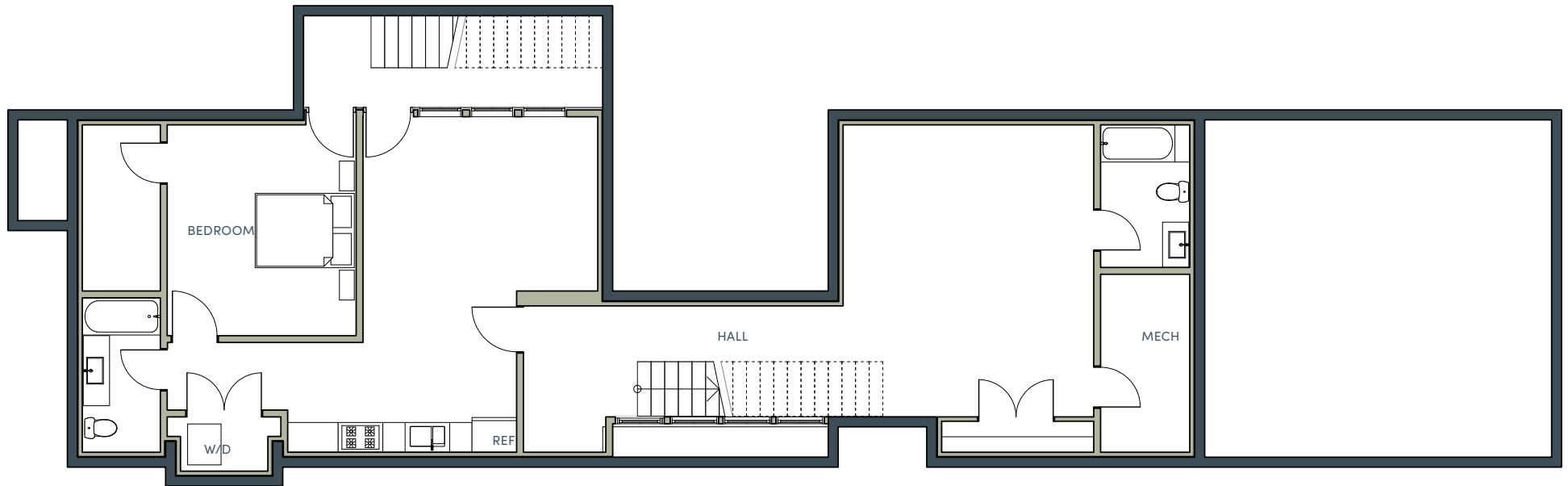


# 557 E HANSEN RESIDENCE - BASEMENT LEVEL

**Main Residence: 3 Bedrooms, 3.5 Bath, approx. 2,845 SF**

**Accessory Residence (basement level): 1 Bedroom, 1 Bath, approx. 1,572 SF**



**Developer:** The Jackson Home Company

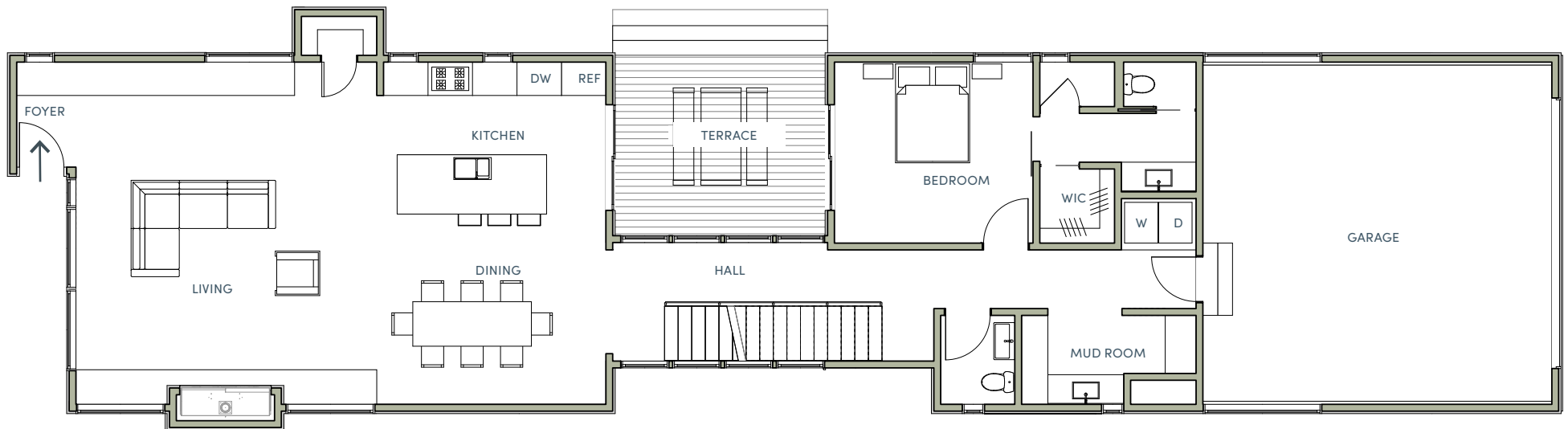
**Exclusive Sales Representatives:** Jake Kilgrow | Associate Broker c. 307.413.2822 & Betsy Bingle | Associate Broker c. 307.413.8090  
Jackson Hole Sotheby's International Real Estate

All drawings are conceptual renderings and the Developer expressly reserves the right to make modifications. The unit layouts, square footage, and dimensions are approximate. Plans, specification, and materials may vary due to construction, field conditions, requirements, and availabilities. Units will not be offered furnished. Furniture layouts shown are for concept only. No representation or warranty is made that a unit owner will be able to implement the furniture layout shown. Prospective purchasers are advised to review the complete terms of the offering plan for further detail as to type, quality, and quantity of materials, appliances, equipment, and fixtures to be included in the units. The complete offering terms are in an offering plan available from Developer.

# 557 E HANSEN RESIDENCE - MAIN LEVEL

**Main Residence: 3 Bedrooms, 3.5 Bath, approx. 2,845 SF**

**Accessory Residence (basement level): 1 Bedroom, 1 Bath , approx. 1,572 SF**



**Developer:** The Jackson Home Company

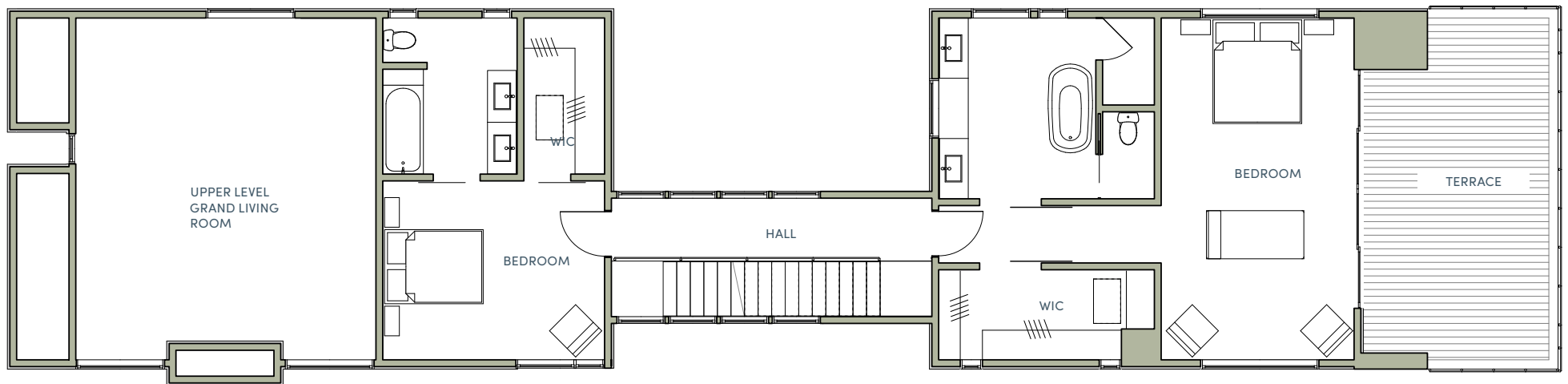
**Exclusive Sales Representatives:** Jake Kilgrow | Associate Broker c. 307.413.2822 & Betsy Bingle | Associate Broker c. 307.413.8090  
Jackson Hole Sotheby's International Real Estate

All drawings are conceptual renderings and the Developer expressly reserves the right to make modifications. The unit layouts, square footage, and dimensions are approximate. Plans, specification, and materials may vary due to construction, field conditions, requirements, and availabilities. Units will not be offered furnished. Furniture layouts shown are for concept only. No representation or warranty is made that a unit owner will be able to implement the furniture layout shown. Prospective purchasers are advised to review the complete terms of the offering plan for further detail as to type, quality, and quantity of materials, appliances, equipment, and fixtures to be included in the units. The complete offering terms are in an offering plan available from Developer.

# 557 E HANSEN RESIDENCE - UPPER LEVEL

**Main Residence: 3 Bedrooms, 3.5 Bath, approx. 2,845 SF**

**Accessory Residence (basement level): 1 Bedroom, 1 Bath , approx. 1,572 SF**



**Developer:** The Jackson Home Company

**Exclusive Sales Representatives:** Jake Kilgrow | Associate Broker c. 307.413.2822 & Betsy Bingle | Associate Broker c. 307.413.8090  
Jackson Hole Sotheby's International Real Estate

All drawings are conceptual renderings and the Developer expressly reserves the right to make modifications. The unit layouts, square footage, and dimensions are approximate. Plans, specification, and materials may vary due to construction, field conditions, requirements, and availabilities. Units will not be offered furnished. Furniture layouts shown are for concept only. No representation or warranty is made that a unit owner will be able to implement the furniture layout shown. Prospective purchasers are advised to review the complete terms of the offering plan for further detail as to type, quality, and quantity of materials, appliances, equipment, and fixtures to be included in the units. The complete offering terms are in an offering plan available from Developer.